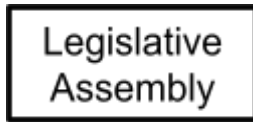


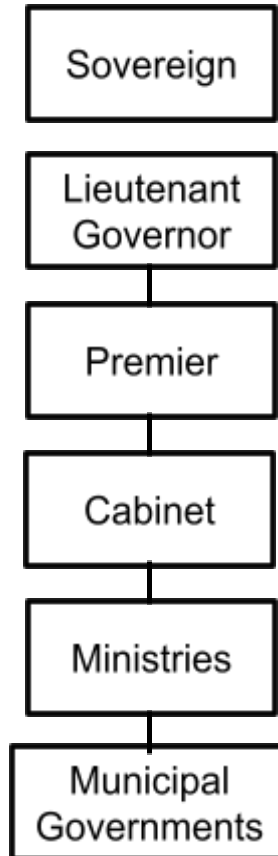


## Structure of the Provincial Government Province of Alberta

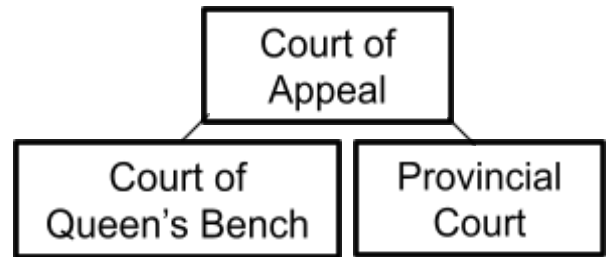
### LEGISLATIVE



### EXECUTIVE



### JUDICIAL



**His Majesty King  
Charles III**  
*Sovereign*



**Her Honour  
The Honourable  
Salma Lakhani**  
*Lieutenant Governor*



**The Honourable  
Danielle Smith**  
*Premier*