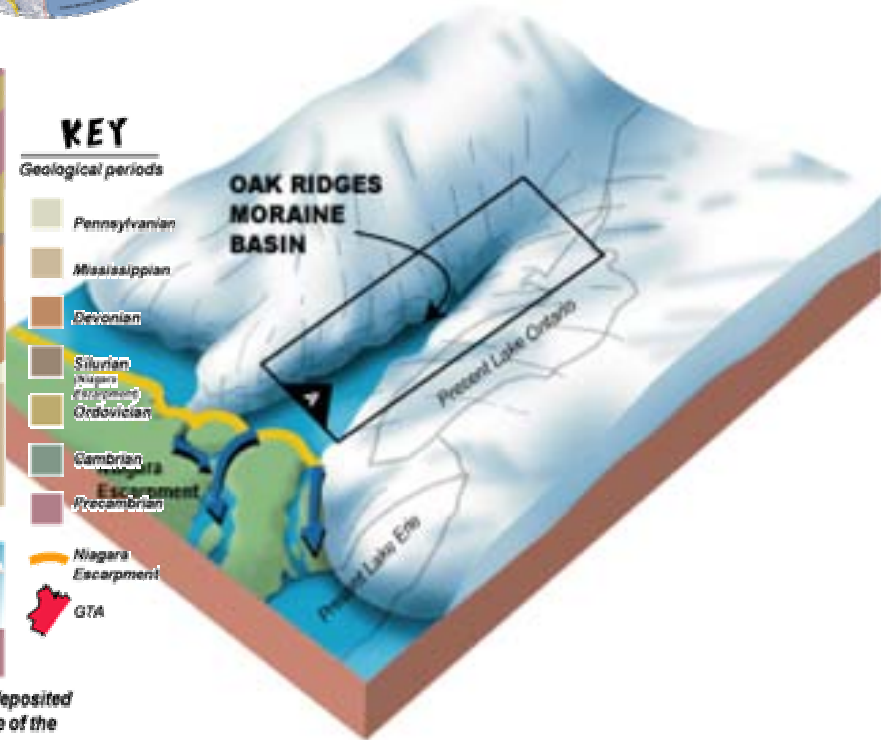
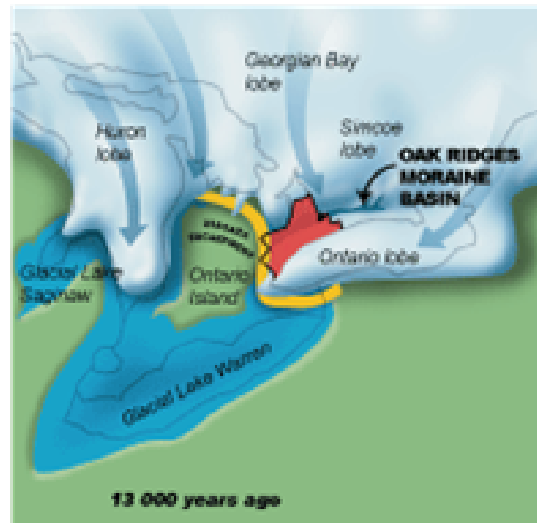
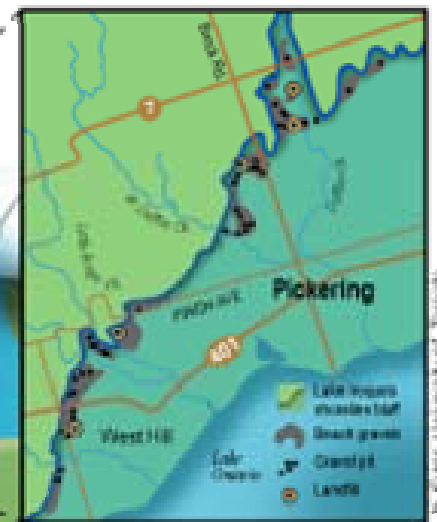
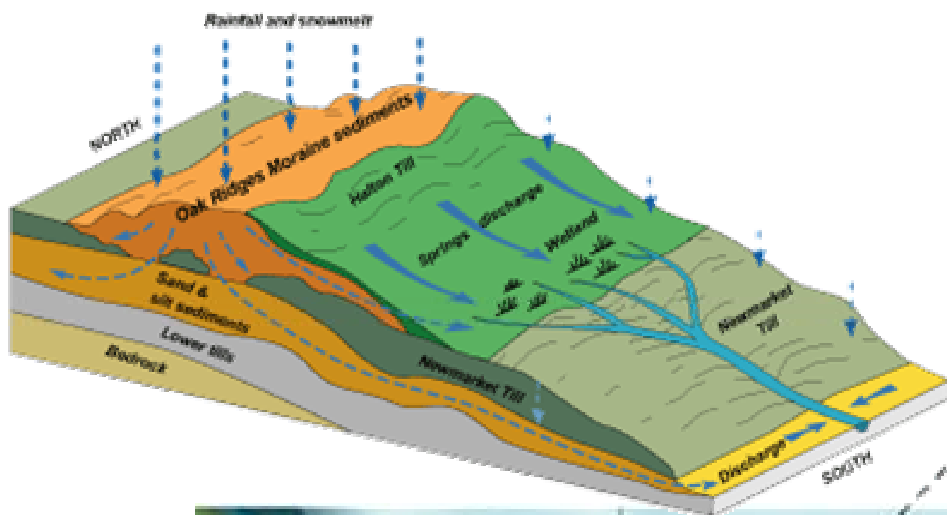


- KEY**
Geological periods
- Pennsylvanian
 - Mississippian
 - Devonian
 - Silurian
 - Niagara Escarpment
 - Ordovician
 - Cambrian
 - Escarpment
 - Precambrian
 - Niagara Escarpment
 - GTA



As the Taconic Mountains eroded, sediments were carried westward and deposited in the Michigan Basin where the layers dip or tilt gently toward the centre of the basin at up to 6 metres per kilometre.





© 2011 University of Toronto

