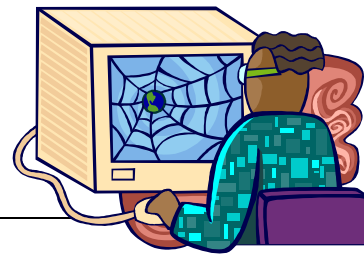


Website Analysis



Use the following chart to analyze a minimum of four web sites pertaining to World Issues. Make sure you have a minimum of one site each from each of the following categories discussed in class: political, environmental, social, and economic. All of the sites that the class has gathered will then be pooled together to create a massive list of web sites that can be viewed by the entire class.

Category	Political	Environmental	Social	Economic
Website Name				
Website Address				
Description of Author, Organization, or Company				
World Issue				
Date Viewed				
Date Website Last Updates				
Value, Reliability				
Links				